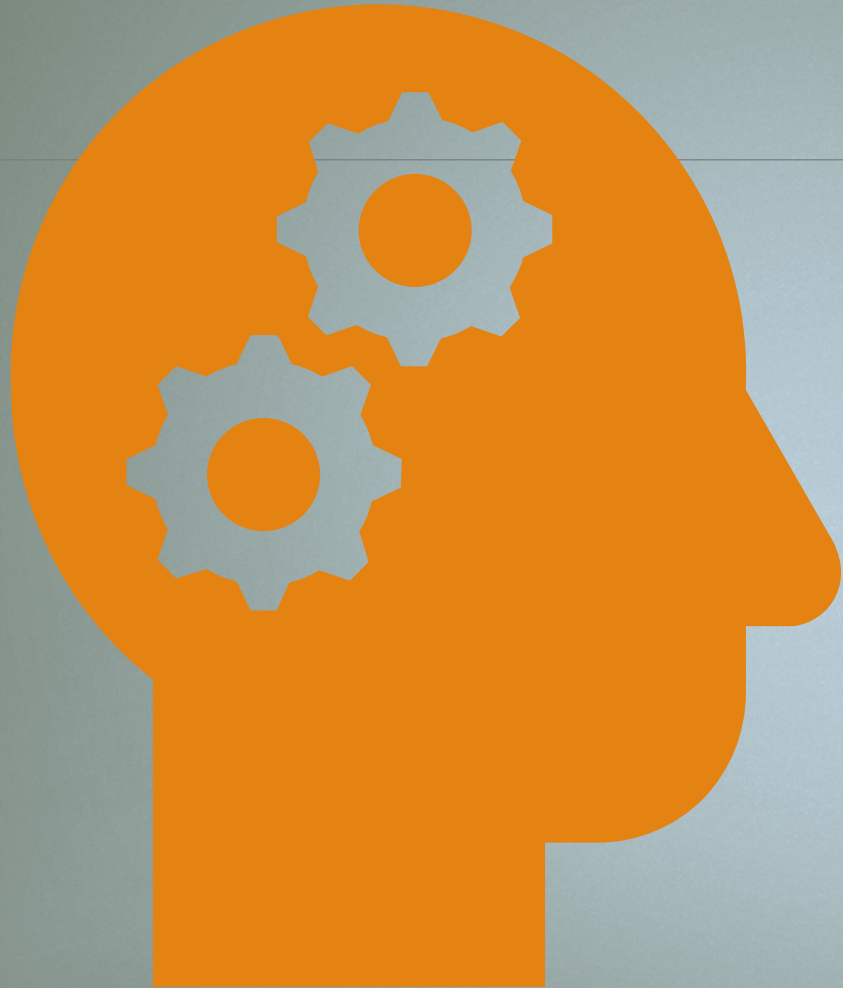


CITY OF OREGON



ARPA FUND - PUBLIC DISCUSSION
October 19th, 2021



What is
ARPA

American Rescue Plan Act Funds

Signed into law on March 11, 2021
("ARPA") provides \$350 billion in
additional funding for state and local
governments.



Funds are allocated to municipalities based on the Previous Census Numbers.

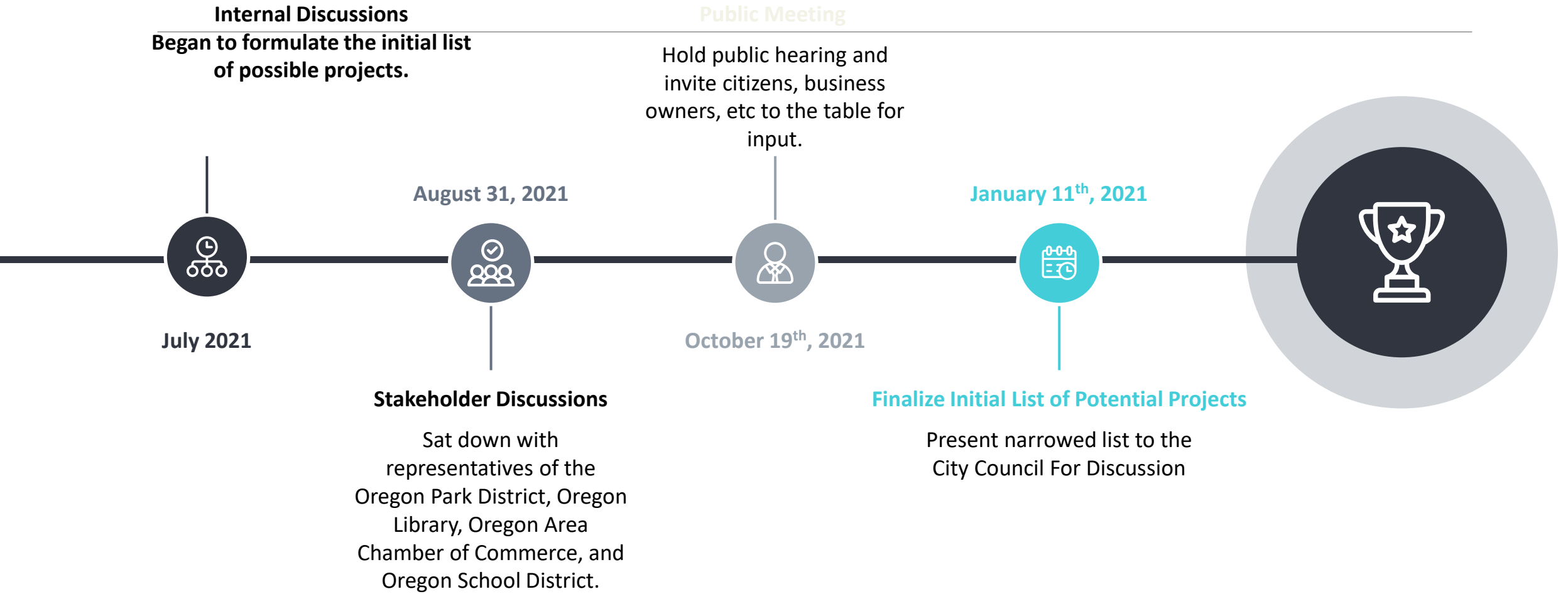
City of Oregon: \$471,726.00

We will receive this in two equal payments.

We have already received the first.

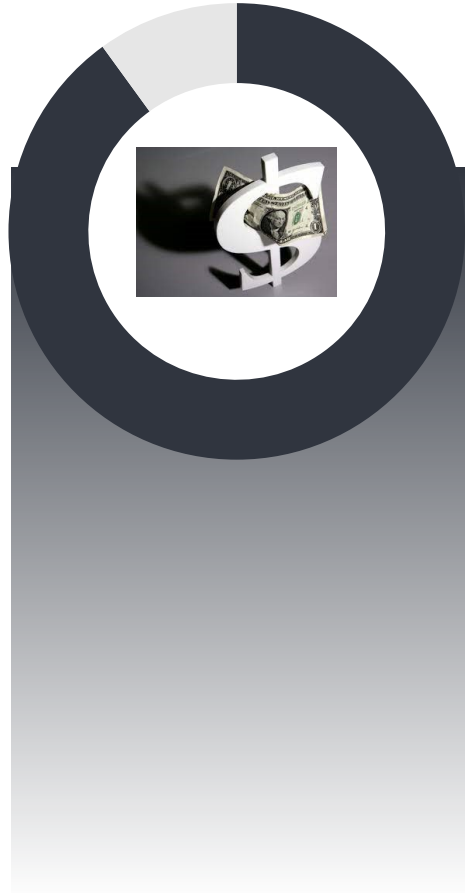
Funds must be spent by 2024.

ARPA TIMELINE



What Can it Be Spent On??

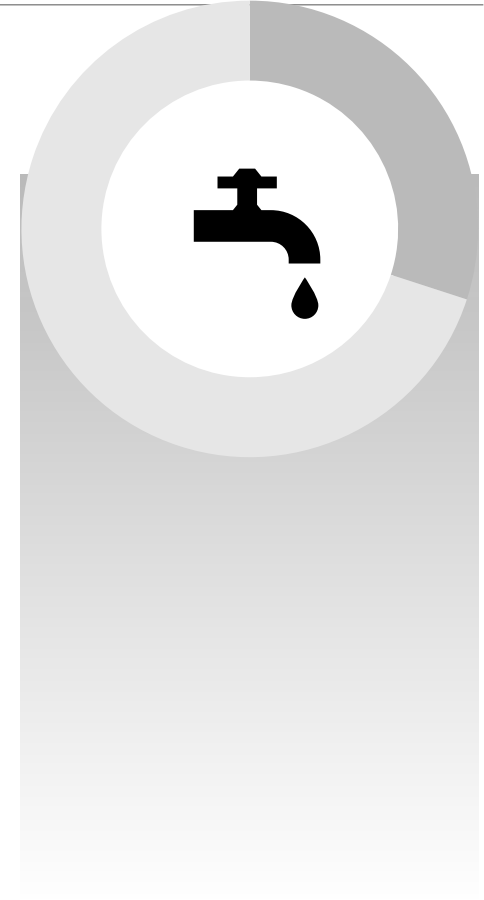
**Economic Recovery
Revenue Replacement Due to Covid**



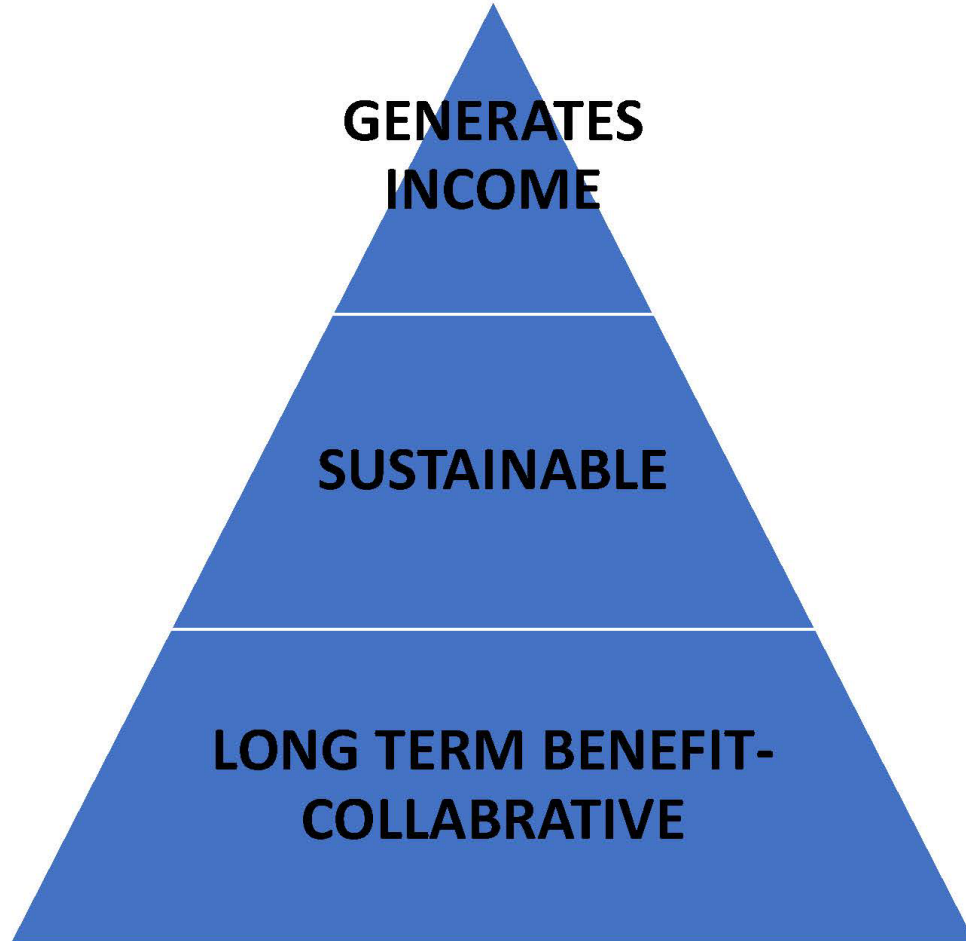
Premium Pay for Essential Workers



**Investments in water, sewer, and
broadband infrastructure.**



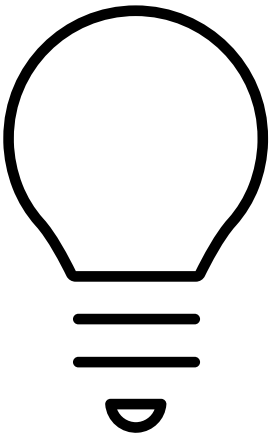
ARPA FUNDS ALLOTMENT HEIRARCHY



**Is there a Long-Term
Benefit?**

Is it Sustainable?

**Does it Generate
income?**



CURRENT IDEAS

Vaccines and Testing

Mobility Challenges

Language Barriers

Medical Mistrust

Homelessness and Housing

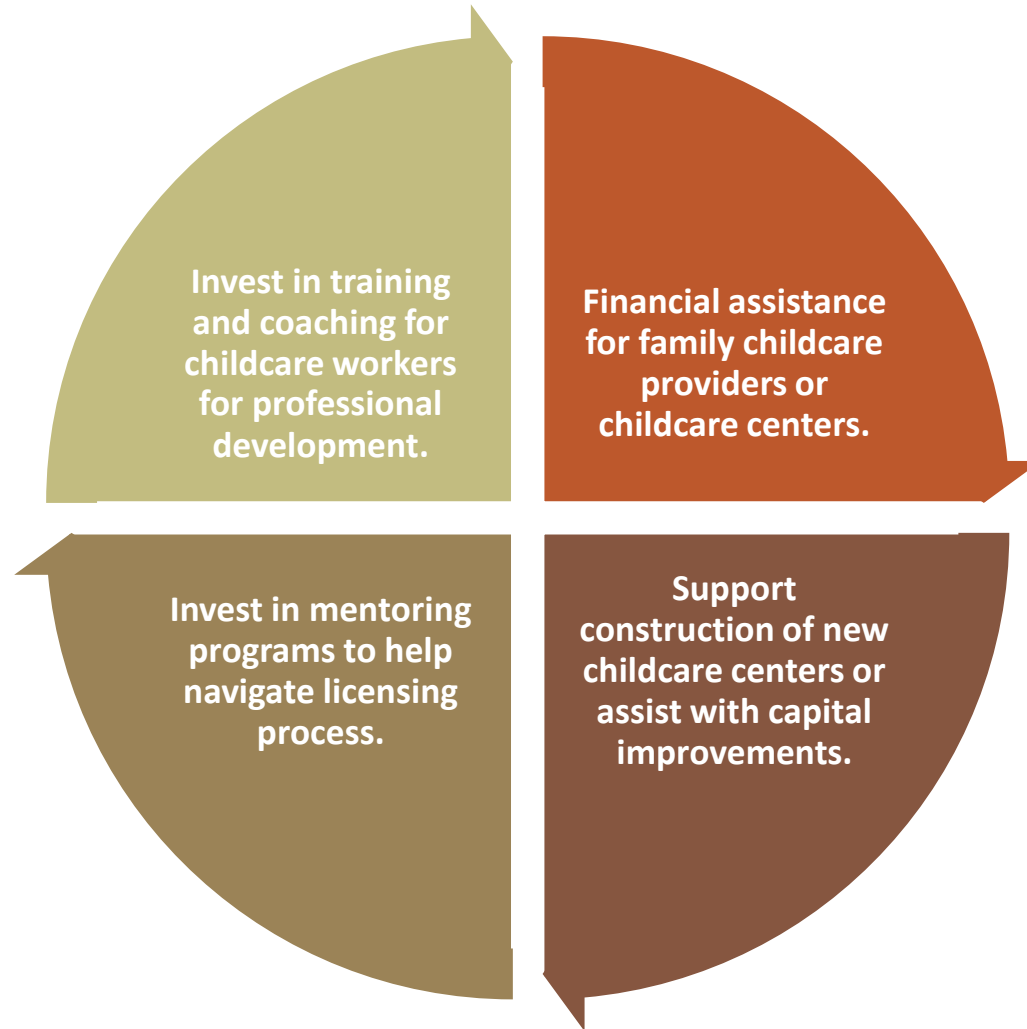
- **Help facilitate downtown apartment construction**
- **Unpaid rent forgiveness**
- **Cover internet costs**
- **Support local homeless shelters**
- **Food, medical bills, childcare, internet access and other expenses**
- **Utility bill support**
- **Housing repair, roof, HVAC**



Low Income Support

**Provide technical support
for accessing federal,
state, and local assistance**

**Existing or new library
programs**



Child Care –
(State
Certified
Only)

Small business, Worker Assistance and Workforce Recovery

- Financial assistance for non-profits, performing arts venues, entrepreneurs, creative industries, restaurants, bars and technical support for small business or nonprofits seeking grants.
- “Work with SBDC, Colleges etc.”
- Financial assistance for workers in restaurant/bars that were impacted.
- Hazard pay for essential workers
- Hold event that supports small businesses.
- Help with City Permitting process for small business applications.
- Workforce development.
 - Existing OHS Programs
- Invest in employment, apprenticeships, or educational opportunities for those most effected.
- Tuition grants
- CMAAA? ADA Ramp?

Diapers, formula,
or other household
needs for those
most affected.

Invest in services
for mental health
impacts for seniors.

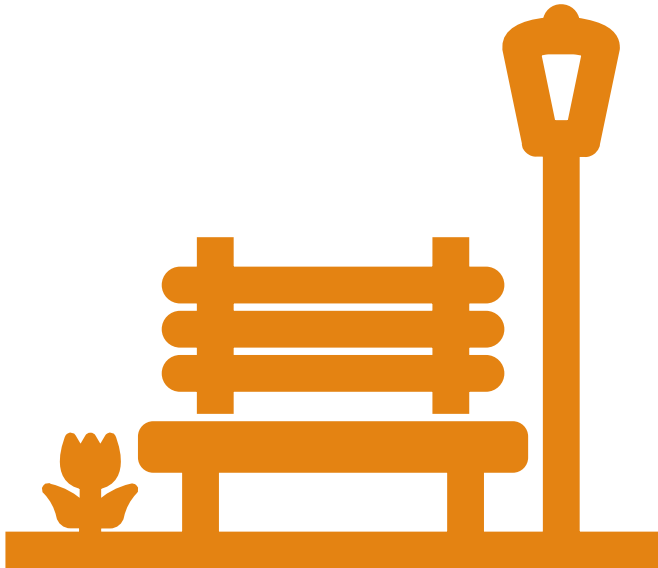
Invest in
alternatives to LE
for response to
violence.

Invest in gender-
based violence
response services.

Drive up Pedestrian
Mall (also green
space)

Fund a study on
Theater rehab or
deconstruction

Community Wellbeing



Transportation

- Invest in public right-of-way and other public spaces for walking, rolling and biking
- Invest critical transportation infrastructure like bridges
- Restoration of funds that were cut for transportation infrastructure
- LOTS – Lee – Ogle Transportation System (Wave Fees?)



Advertising –

[Kiosks](#)

[Community Tourism APP](#)

[Wayfinding Signage for downtown](#)



Hire a grant writer



Car Charging Stations



Support Oregon Area Chamber of Commerce Programs



Building Incentives



Relocate Illinois Grants



Essential Worker Pay for Businesses



Marketing for the Job Board.

Tourism Support

Assist Oregon Library



**Laptop technology work centers to facilitate
technology-based workshops and classes for Citizens.**

The background is a dark teal color filled with a repeating pattern of speech bubbles. Each bubble is a different color (red, yellow, purple, grey) and contains a large, dark blue question mark. The bubbles are scattered across the entire frame, creating a sense of many questions or ideas.

ADDITIONAL IDEAS?



THANK YOU